

TOWN OF LEE, NEW HAMPSHIRE

7 Mast Road

Lee, New Hampshire 03861

(603) 659-5414

February 27, 2015

DUE TODAY

LICENSE PLATE DESIGN CONTEST

The Lee Police and Lee Fire Associations are working with the members of the 250th Anniversary Planning Committee to purchase commemorative license plates to be used during 2016. There is a contest for the best design for the Lee 250th license plate. The rules for the design are that the design has to be done freehand without any shadowing. We are looking for a design that is representative of the town's history. [CLICK HERE](#) to view the design that the Town of Fremont used for their 250th commemorative plate. Please submit your entries to the Police Department by **February 27, 2015**. Email entries accepted at restee@leenhpolice.org. Good luck!

VOTER INFORMATION GUIDE

NOW AVAILABLE

[CLICK HERE](#) FOR A COPY

TOWN ELECTION/BALLOT SESSION

MARCH 10, 2015 7:00 AM - 7:00 PM

LEE PUBLIC SAFETY COMPLEX

2015 OPEN APPOINTED POSITIONS

[CLICK HERE](#) FOR LIST, APPLICATION, POLICIES,

RULES AND RSA: 91-A

TO VIEW AN EXAMPLE ELECTION BALLOT FOR

TOWN OFFICERS [CLICK HERE](#)

TO VIEW AN EXAMPLE BALLOT FOR TOWN

WARRANT ARTICLES 1-21 [CLICK HERE](#)

HEAR THE ENTIRE **DELIBERATIVE SESSION** HELD ON
JANUARY 31ST FOR VIEWS EXPRESSED BY THE SELECT
BOARD AND LEE CITIZENS BY VIEWING THE VIDEO
AVAILABLE ON THE TOWN WEBSITE

Go to www.leenh.org > Quicklinks > View Meetings/Media Site

LEE ANNUAL TOWN REPORT

Electronic Copy Available NOW

[CLICK HERE](#)

Hard Copies Available March 3rd

MARCH SELECT BOARD MEETINGS

Mondays, March 2nd, 16th, 30th at 6:00 pm

Go to www.leenh.org for more Town meeting dates

Go to http://leenh.org/pages/LeeNH_LibraryCal/?formid=158
for the Library Calendar

OFFICE OF THE STATE FIRE MARSHAL

[CLICK HERE](#) for February issue of Safety Educator

3rd Graders enter into a Calendar Contest by 2/28/15



FIND OUT IF BACKYARD CHICKENS ARE FOR YOU!

Come hear the poultry basics and practical tips on raising
egg-laying chickens and broilers at home:

Wednesday, March 4th 6:30 – 8:00 pm

East Kingston Elementary School, 5 Andrews Lane

<http://eks.sau16.org/index.php/about-us/directions>

Daimon Meeh, UNH Cooperative Extension Agriculture Field Specialist, will present information on feeding, housing, choosing the appropriate breed and more. Appropriate for those interested in obtaining chickens or those who already own backyard chickens and want learn more about their proper care. This workshop is free and open to the public. Youth are welcome to attend. Preregistration encouraged, [click here](#) to sign up online. For more information, contact Daimon Meeh at daimon.meeh@unh.edu or (603) 679-5616.

[CLICK HERE](#) for flier

**NOTICE of PUBLIC MEETING of the STRAFFORD
COUNTY LEGISLATIVE DELEGATION**

2015 Budget Review and Approval

**Friday, March 6th 10:00 am (Snow date: Friday, March 13th 10am)
Superior Court, 2nd Floor, Rm II, County Farm Rd, Dover NH**

- Receive Recommendations of the Delegation Executive Committee on Commissioners' 2015 Proposed Budget
- Vote on Acceptance of the Strafford County 2015 Budget
- Approve Minutes of January 26, 2015 Orientation, January 28, 2015 Public Hearing, and December 10 and 17, 2014 Organizational Meetings (enclosed and previously sent via e-mail)
- Any other business which may legally come up



**FAMILY NATURE WALK AT LEE TOWN FOREST
SATURDAY, MARCH 7th, 9:30 AM**

After being hammered with seemingly endless snowstorms and bitterly cold days, Spring has seemed a very distant hope; but the days have steadily been getting longer, and on nature walk day we'll be enjoying 11.4 hours of daylight - nearly to the equinox when the night's long reign will finally have ended for another year. Bird species that remained with us throughout the long winter have been responding to the increasing day length. Chickadees, titmice, nuthatches and cardinals are singing their love songs each morning now: presaging the dawn chorus that will really heat up in a few more months. Celebrate the soon-to-be-over winter with a walk in the town forest. We'll keep an eye out for animal tracks in the snow, look at a few frozen avians (including a pileated woodpecker and a barred owl) and search for signs of Spring's return.

We meet behind the backstop of the baseball field adjacent to Mast Way School. All ages are welcome! Monthly family nature walks are sponsored by the Lee conservation Commission and the Senior Advisory Committee.

2nd ANNUAL FARM STYLE BREAKFAST



SUNDAY, **MARCH 8TH** 8:00AM – 12:00 PM
JEREMIAH SMITH GRANGE HALL, LEE NH
[CLICK HERE](#) for flier

This event is co-sponsored by the Strafford County Farm Bureau and the Lee and Durham Agricultural Commissions. Funds raised will help support the new Youth-In-Agriculture Grant Program. You may reserve tickets and pay at the door. Reserved tickets are \$8 for adults & \$5 for kids under 12. The price at the door will be \$10 for adults & \$7 for kids under 12. Please email bcilley@nhfarmbureau.org, esawtelles@aol.com or walgrove@comcast.net to reserve or volunteer OR call Erick Sawtelle at 603-234-7907 or 603-659-8106 or Laura Gund at 603-659-2044. Thank you and we hope to see you there!

SENIOR ADVISORY COMMITTEE

The next SAC meeting will be held **Monday, March 9th** 9:00am at the Public Safety Complex. We will continue to discuss senior housing. If you would like to share your opinion please contact Nancy at NancyAliceR@cs.com. We do need feedback from community members who choose to remain in Lee and want to downsize or do not want the responsibility of maintaining their property themselves. We also welcome other topics of conversation. SAC and the Lee Library sponsor the Knitting Gathering held twice monthly on Wednesdays from 9:00-11:00 am at the library. Our next meeting date is **March 4th**.

BILL STEVENS & CHIEF NEMET CLEANING OFF



THE ANNEX

KINDERGARTEN & NEW STUDENT
REGISTRATION for ORCSD

Mast Way & Moharimet Elementary Schools
Student Registration Week is scheduled for

March 9th – 13th 9:00 am – 4:00 pm

If your child turns 5 on or before 9/30/15, he/she will be eligible for our Kindergarten program. Please contact your assigned school to provide preliminary information about your child. If you are unsure of your child's assigned school, feel free to call either Mast Way Elementary, 659-3001, or Moharimet Elementary, 742-2900, for further information. You will need to have a copy of your child's birth certificate, health & immunization records and proof of residency in the Oyster River School District such as a current, dated, utility or Comcast bill or a lease with your name and address listed. Please have these with you when you come to register.



Welcome SPRING
Grow It Yourself

March 21, 2015
Plymouth State University
Plymouth, NH

G I Y
grow it yourself

A Garden Symposium

Open to both Master Gardeners and the public, the daylong Welcome Spring Symposium offers topics for beginners and advanced gardeners.

Register TODAY



 University of
New Hampshire
Cooperative Extension

 NHMGA
Master Gardeners
of New Hampshire



**BACKYARD FARMING INITIATIVE SERIES 2015
PRESENTS FIVE NIGHTS, 10 FARMS: EXPLORE
YOUR FARMING DREAMS**

NEXT DISCUSSION Monday, March 23rd 7:00 pm

Jeremiah Smith Grange Hall, Lee Hook Road, Lee

[CLICK HERE](#) for entire series schedule

Farm to Institution
SUMMIT 2015
APRIL 7-9 UMASS AMHERST



Registration is now open for the Farm to Institution Summit taking place in Amherst, Massachusetts! The Summit is a first-year conference that will bring together at least 800 leaders from the Northeast who are working to get more local and regional food into schools, colleges, health care and other institutions. With over 50 workshops offered in the Farm to School, Farm to College and Farm to Health Care sectors, this is a landmark event not to be missed!

Please make note: the early bird deadline to save on registration is March 2, 2015. After March 2nd, registration fees will increase by at least \$20/day. Online registration will close March 30th and walk-in registration is not guaranteed.

Register Now at: www.regonline.com/builder/site/?eventid=1673184

Additionally, if you are in need of a financial scholarship, please go to <http://www.farmtoinstitution.org/summit#scholarships>

Scholarship applications will be accepted until March 2nd.

Please visit the **Conference Website** for more information about the programming ~ keynotes, workshop descriptions and more: www.farmtoinstitution.org/summit.



[CLICK HERE](#) for MCGREGOR MEMORIAL'S
2014 RESPONSE STATISTICS for the TOWN of LEE



LEE was named 4th Safest in NH!
GO TO <http://www.safewise.com/blog/30-safest-cities-new-hampshire/> to find out more!



WARNING

As we approach tax season, please beware of IRS scams!
You can also go to www.irs.gov/uac/Tax-Scams-Consumer-Alerts to learn about more about scams using the IRS.

**CLICK HERE for NH Department of Safety
News Release on Risks to Propane & Heating Systems
Caused by Snow and Ice**

<http://www.nh.gov/safety/divisions/firesafety/news/20150217-propane-risks.html>

RISK MANAGEMENT BULLETIN

Reduce the Risk of Roof Collapse from Snow and Ice Buildup

[CLICK HERE](#) for more information



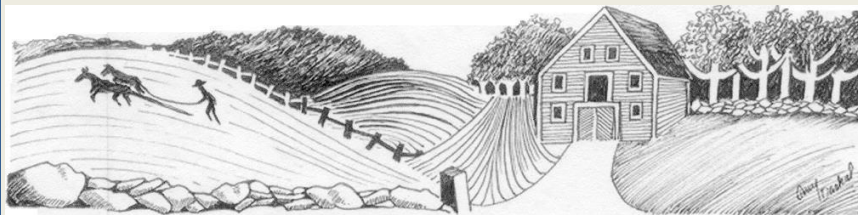


[CLICK HERE](#) for Voluntary Recall to Replace certain Kidde plastic Zytel® nylon valve disposable fire extinguishers

CHILD CARE WEATHER WATCH

Below a Child Care Weather Watch recommendation from the American Academy of Pediatrics. Although it refers to child care providers it works as a great guide for moms and dads.

<http://www.idph.state.ia.us/hcci/common/pdf/weatherwatch.pdf>



LEE HERITAGE COMMISSION

WANTED

HISTORIC PHOTOS OF LEE

[CLICK HERE](#) for more information

READY RIDES NEEDS DRIVERS from LEE!

READY RIDES offer free rides to medical appointment for residents 55+ and those who are disabled and unable to drive. They serve Lee, Barrington, Durham, Madbury, Newmarket, Northwood, Nottingham and Strafford. Drivers receive 25 cents per mile and can pick what rides they want to do. Drivers must be at least 25 years old, have a valid driver's license and a favorable driving record with a legally registered, inspected and insured vehicle. You will need to complete a volunteer application that includes a motor vehicle and criminal background check. Please call Meri Schmalz at 224-8719 or email info@readyrides.org for information about how to help your neighbor.

IMPORTANT POLLING PLACE RULES

NH 659:43 Distributing Campaign Materials at Polling Place

I. No person who is a candidate for office or who is representing or working for a candidate shall distribute or post at a polling place any campaign material in the form of a poster, card, handbill, placard, picture, or circular which is intended to influence the action of the voter within the building where the election is being held.

II. No person who is a candidate for office or who is representing or working for a candidate shall distribute any campaign materials or perform any electioneering activities or any activity which affects the safety, welfare and rights of voters within a corridor 10 feet wide and extending a distance from the entrance door of the building as determined by the moderator where the election is being held.

III. Whoever violates any of the provisions of this section shall be guilty of a violation.

IV. (a) Whoever violates any of the provisions of this section shall be subject to a civil penalty not to exceed \$1,000.

(b) The court, upon petition of the attorney general, may levy upon any person who violates the provisions of RSA 659:43 a civil penalty in an amount not to exceed \$1,000 per violation. All penalties assessed under this paragraph shall be paid to the secretary of state for deposit into the general fund.

(c) The attorney general shall have authority to notify suspected violators of this section of the state's intention to seek a civil penalty, to negotiate, and to settle with such suspected violators without court action, provided any civil penalty paid as settlement shall be paid to the secretary of state for deposit into the general fund

The highlighted section of the above-captioned NH state law was determined at the March 1983 Town Meeting where the voters adopted the following:

“No person who is a candidate for office or who is representing or working for a candidate shall distribute or post at a polling place any campaign material in the form of a poster, card, handbill, placard, picture, or circular which is intended to influence the action of the voter within the building where the election is being held or within a radius of 100 feet of the entrance door of the building where the election is being held.”

TOWN OF LEE NOW OFFERS ONLINE SERVICES



for car registration renewals, dog licenses, vital records and property taxes. To access the new online services, please visit the Town of Lee's website at www.leenh.org. Credit/debit cards and ACH payments (bank-to-bank transfers) will be accepted for all online transactions. Credit/debit card and internet processing fees will apply.



The Town Clerk/Tax Collector's office now accepts MasterCard, Visa, American Express, and Discover credit cards; debit cards that display these logos are also accepted. *Please note:* There are additional fees to cover the cost of using a credit or debit card - 2.95% of the total transaction with \$1.50 minimum. These convenience fees go directly to the Town of Lee's third party credit/debit card processor and are not retained by the Town of Lee. Convenience fees cannot be refunded. Cash and checks are still accepted forms of payment and do not require additional fees.



LEE PUBLIC LIBRARY

You like us at the library, now like us on Facebook!



LIBRARY REGULAR HOURS

Monday, Tuesday, Wednesday: 12:00 – 8:00 pm

Thursday, Friday: 10:00 am – 5:00 pm

Saturday: 10:00 am – 3:00 pm



MAKE A SNOWMAN – DROP-IN CRAFT

February 21ST – 28TH

Stop by and make a soft, cotton snowman with a carrot nose of course!



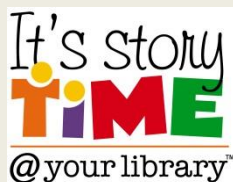
ZENTANGLE® WORKSHOP

Tuesday, March 3rd 6:00 pm

Zentangle® is an easy-to-learn, relaxing and fun way to create beautiful images by drawing structured patterns. The process of tangling was created by Maria Thomas, a world-renowned calligrapher and Rick Roberts, a musician and former Zen monk. Zentangle® is enjoyed by a wide range of skills and ages and can be achieved by all "...one stroke at a time!" There is a \$10 materials fee for this class taught by Jean Kearney. **Limited to 10, ages 15 and up. Please register by calling 659-2626. Co-sponsored by the Lee Library and the Friends of the Lee Library.**

This is our final workshop for Creating Connections until fall.

ON - GOING PROGRAMS



Thursday & Friday at 10:30 am

These fun 30 - 40 minute programs include stories, songs, finger plays, flannel board and a craft. Registration is not required. **There will be no story time on Thursday, March 5th.**



NO FOOLIN, JUST FUN - ADULT GAME DAY

Tuesdays at 9:30 am

Come join the fun, make new friends and learn some new games. All are welcome! Open to all adults 18 and older.



STORY TREKKERS

Tuesdays 3:30 – 4:30 pm Ages 6-10

Read a variety of authors and award-winning books. Snack, games and a craft included. Most way students ride bus 23. **Please register. This program is currently filled and has a waiting list.**



KNITTING GET TOGETHER

Tuesdays, 6:30 - 8:00 pm

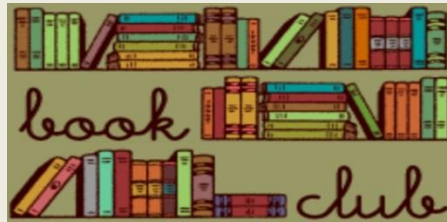
Come and join other knitters for an evening of knitting and socializing. Bring that project you've been meaning to finish and make some new friends. Sorry, there are no instructors.



KNITTING FOR 50+

ALTERNATE WEDNESDAYS, NEXT MARCH 4th & 18th 9AM

A drop-in group will meet at the library. Help is available from instructor, Donna Kay. All levels welcome. **Offered by the Senior Advisory Committee in conjunction with the Lee Library.**



ROCKIN' READERS BOOK CLUB

Thursdays 3:00 – 4:00 pm

5th & 6th Graders

Read/discuss a different book per month. Take bus 21. **Please register.**

CPR

Wednesday, March 4th 6:00 – 8:00 pm

The McGregor Institute of EMS will be teaching this American Heart Association CPR program. The program is free, but there is a \$20 materials fee. To register, go to McGregor's community calendar at www.mcgregorems.org/institute.

BOOK SALE

Saturday, March 7th 10:00 am – 2:00 pm

Lots of books and DVDs for sale.



ADULT BOOK DISCUSSION GROUP

Monday, March 9th 7:00 pm

“In The Garden of Beasts” by Erik Larson “Larson has meticulously researched the Dodds’ intimate witness to Hitler’s ascendancy and created an edifying narrative of this historical byway that has all the pleasures of a political thriller...a fresh picture of these terrible events”—*New York Times Book Review*

THE LIBRARY HAS THE FOLLOWING MUSEUM PASSES!

| | |
|--|---------------------------------|
| Boston Children’s Museum | Strawbery Banke |
| Boston Museum of Science | Children’s Museum of NH |
| Currier Museum of Art | Isabella Stewart Gardner Museum |
| Museum of Fine Arts Boston | Seacoast Science Center |
| Mariposa Museum & World Culture Center in Peterborough, NH | |

Check out their websites to see what is happening and then get a pass from the library that offers free or reduced admission.



MARIPOSA MUSEUM AND WORLD CULTURE CENTER

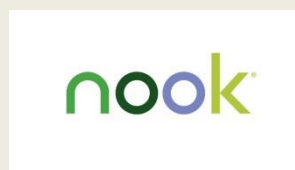
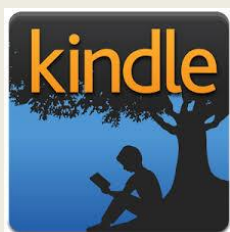
Peterborough, NH

Thanks to the generosity of the Friends of the Lee Public Library, we now have a membership to the Mariposa Museum and World Culture Center. The pass admits 2 adults & 2 children for free. Check out their website www.mariposamuseum.org.



CURRIER MUSEUM OF ART Manchester, NH

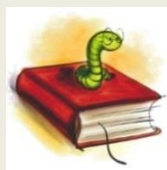
Our pass to the Currier courtesy of the Friends of the Lee Public Library, admits up to 2 adults for free. Children under 18 are also free. Upcoming exhibits include, Still Life: 1970's Photorealism, Audubon's Wild Animals of North America, Witness to History: James Nachtwey Photography, and Killer Heels: The Art of the High Heeled Shoe. Check out their website for all their programs: www.currier.org.



Did you know the library has a Kindle and a Nook available for checkout? Great opportunity to explore whether or not you like reading on an electronic device!

BOOKWORM DIGEST

Sign up for the Bookworm Digest: A monthly newsletter all about everything going on at Lee Public Library. Send an email to leelibrary@comcast.net to get the Bookworm Digest sent once a month.



Please visit the following link to view all the library's programs: leenh.org/pages/LeeNH_LibraryCal/?formid=158



FRIENDS OF THE LEE LIBRARY

The Friends of Lee Library is a non-profit organization that supports Lee Library activities through memberships and fundraising. Activities include museum passes, children's vacation and summer programs, and adult educational programs. Thanks to your funding, the Friends of Lee Library will continue to support the wonderful activities! Not a member yet? It's easy - [CLICK HERE](#) !

LAMPREY HEALTH CARE SENIOR TRANSPORTATION PROGRAM

Lamprey Health Care's Senior Transportation program provides rides to essential services for individuals over the age of 60 and/or with disabilities. Our handicap-accessible buses take seniors and adults with disabilities to the grocery store, pharmacy, doctor, or bank! For reservations or more information call 1-800-582-7214 or 659-2424 Monday through Friday, 8:00am - 4:00pm or go to lampreyhealth.org/index.php/patient-services/transportation_program



JOIN THE LEE FIRE RESCUE DEPT.

The Department is always looking for new members!

Please stop by the Safety Complex Monday - Friday 8:00 am to 4:00 pm or during one of our training meetings, held on the 2nd and 4th Thursday of each month at 7:00 pm.



EMERGENCY NOTIFICATION SYSTEM

The Town of Lee Police, Fire & Emergency Management utilizes the emergency notification system **CODE RED**. Visit leenh.org to sign up!



CHANNEL 13

Check your local TV channel 13 to view Selectmen's meetings aired daily at 7:00 am; 2:00 pm; 7:00 pm. [CLICK HERE](#) for more details on Channel 13. [CLICK HERE](#) to view town meetings and videos online through the media site at leenh.org.

| Sun | Mon | Tue | Wed | Thu | Fri | Sat |
|-----|-----|-----|-----|-----|-----|-----|
| | | | | 1 | 2 | 3 |
| 4 | 5 | 6 | 7 | 8 | 9 | 10 |
| 11 | 12 | 13 | 14 | 15 | 16 | 17 |
| 18 | 19 | 20 | 21 | 22 | 23 | 24 |
| 25 | 26 | 27 | 28 | 29 | 30 | |

MEETING CALENDAR

To view the meeting calendar on leenh.org [CLICK HERE](#)



DISPOSAL OF PRESCRIPTION DRUGS

A drop-off box is available at the Public Safety Complex for unused and unwanted prescriptions.

STRAFFORD COUNTY CITIZEN CORPS HEALTH & SAFETY COUNCIL OF STRAFFORD COUNTY

Click on the "Sr" web page link for more information about Influenza.
dhhs.nh.gov/dphs/cdcs/influenza/index.htm



WILKINSON FOOD PANTRY Lee Church Congregational 17 Mast Rd

The food pantry is open to any family in the Town of Lee. The pantry is open the first and third Monday of each month from 6 - 7:00 pm. If there is an emergency please call the Church office at 659-2861. All visits to the pantry are strictly confidential.



**Community Action Partnership
Pregnant? New Baby? CAP Can Help!**

If you are pregnant, know someone who is, or just had a baby, Community Action can help. We have a free Home Visiting program for teens and women age 25 and under. Call CAP's Home Visiting at 603-516-8108 to learn more or visit www.traffordcap.org.



FUEL & ELECTRICAL ASSISTANCE

CAP employees are now taking appointments for fuel and electrical assistance. Last year, we served nearly 3,900 households. Income-eligible households can get help paying their winter heating bills by applying for fuel assistance now through April 30, 2015. Electrical assistance is available year round. We have flexible hours and locations for appointments. Call today at 603-516-8126 or 603-516-8191. Visit www.traffordcap.org



DONATIONS NEEDED FOR FOOD PANTRIES

We are seeking donations of non-perishable food items, grocery store gift cards and financial donations to help stock our food pantries in Dover, Farmington and Milton. Supplies are critically low yet demand remains very high. To donate, visit www.traffordcap.org/donate today! Our food pantries serve individuals and families from all over Strafford County.

To receive the E-CRIER via email EVERY WEEK go to www.leenh.org, click on Subscribe to E-Alerts and follow the directions to subscribe. It's that easy!
